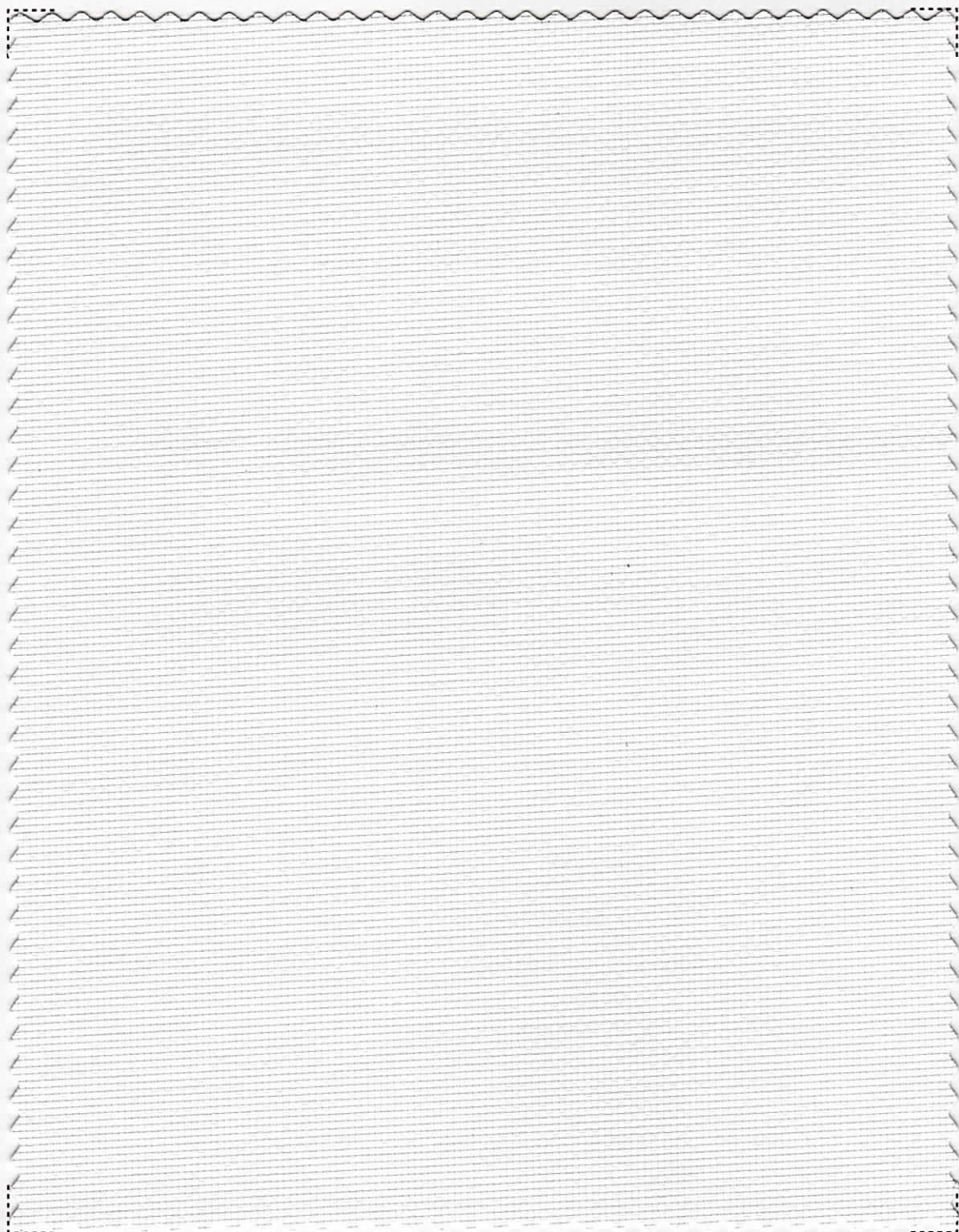
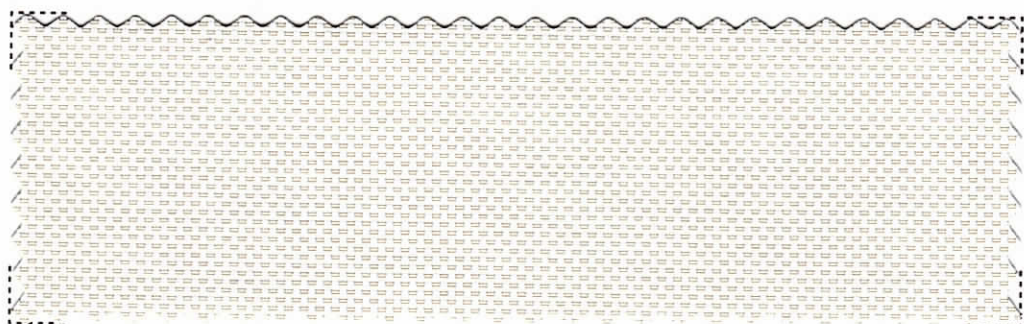


Toka Blackout

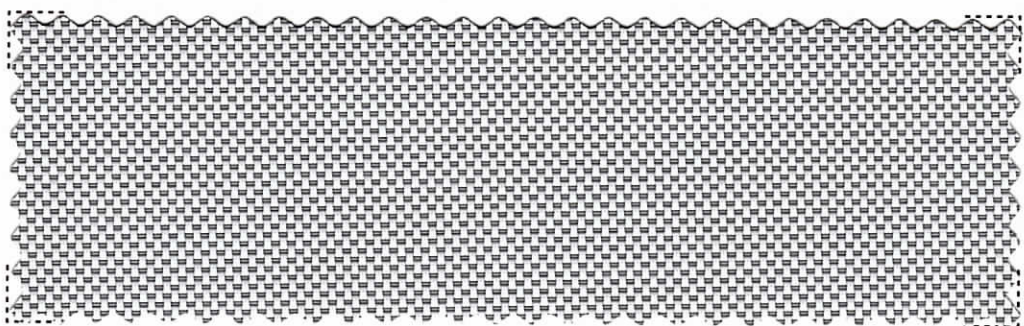


Toka Blackout





02

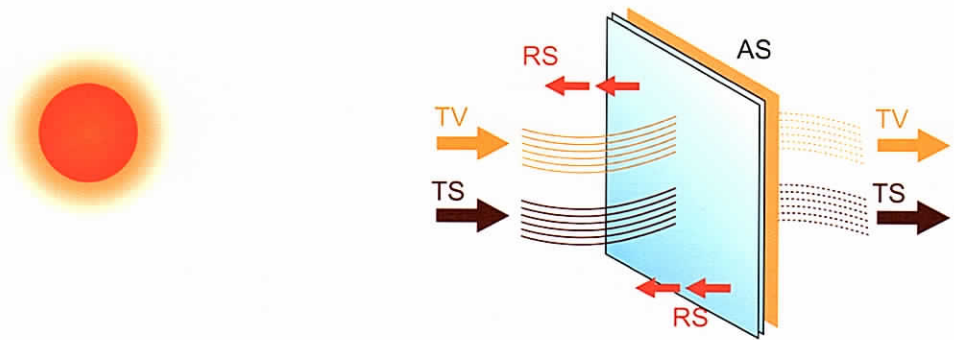


03

Informazioni Tecniche - Technical Specification

Composizione - Composition	50% PVC 22% Polyester & 28% Foam Backing
Fattore d'apertura - Openess factor	Blackout
Altezza - Width	cm 250 - 98"
Lunghezza rotoli - Roll length	+/- mt 27,4 +/- 30 yards
Peso - Weight	587g/m ² +/- 5%
Spessore - Thickness	0.61 mm +/- 5%
Solidità del colore - colour fastness	Class 4.5 (AATCC 16-2003)
Comportamento alla fiamma - Flame resistance	Ignifugo - Flame retardand
Manutenzione - Washing instructions	Pulire con panno umido-Clean with damp cloth

Fattori termici e ottici - Thermal and optical factors



Metodo di misurazione / Methods of Measuring: ASHRAE Standard 74-1988

Ts - Trasmissione solare / Solar Transmittance

Rs - Riflessione solare / Solar Reflectance

As - Assorbimento solare / Solar Absorbance

Tv - Trasmissione luce / Visible Transmittance

Tuv - Trasmissione UV / UV transmittance

Sc - Coefficiente d'ombra / Shading Coefficients

1/8" Cl - inch Vetro chiaro / Clear Glass

1/4" Cl - inch Vetro chiaro / Clear Glass

1/4" H.A. - inch Termoassorbente / Heat Absorbing

■ Luce-Light

■ Calore-Heat

■ Tessuto-Fabric

SC - %

Colore	Ts%	Rs%	As%	Tv %	Tuv %	1/8"Cl	1/4"Cl	1/4"H.A
01	0	71	29	0	0	0.31	0.31	0.30
02	0	71	29	0	0	0.31	0.31	0.30
03	0	71	29	0	0	0.31	0.31	0.30

